



NORSTEEL

OKANAGANS STEEL BUILDING LEADERS SINCE 1992



**2711 AUBURN ROAD
WEST KELOWNA, BC | V1Z 3H7
OFFICE | 250.769.3846
TOLL FREE | 1.800.932.9131
INFO@NORSTEEL.BUILD**



WWW.NORSTEELBUILDINGSYSTEMS.COM

WHO WE ARE

Norsteel Building Systems Ltd. has been building pre-engineered steel buildings in the Okanagan and beyond since 1992. With over 650 buildings to our credit over 30 years, this 2nd generation business builds across BC and beyond, including Alberta and Saskatchewan. With our head office in West Kelowna and staff strength of 25+, we are the Okanagan's leader in steel buildings. Our original owner, Brad Miller, sold the business to his son, Brandon Miller, and son-in-law, Jason Eising, and together they continue to grow and develop the company.

HEAD OFFICE

Norsteels head office is located in West Kelowna, BC, just a few minutes from downtown Kelowna City. In 2021, the owners, Brandon and Jason decided it was time to build a new head office - something they both had been dreaming of for years. With some careful planning and detailed designing, the both of them were able to put their vision to fruition and add on to a pre-existing pre-engineered warehouse that they had previously built, and now own. The new office has two floors complete with 5 private offices, a large reception area, full kitchen, large open boardroom and plenty of storage. If that wasn't enough, 3 additional large bays were added on as well, to give the owners some extra work space as well as allow for some personal storage. Our team includes hands on owners, dedicated project managers, site superintendents, in-house safety and office administration.





SERVICES PROVIDED

- Drop ship building to your jobsite – *Supply Only*
- Supply and erect building superstructure by our certified crew
- Full Turnkey (General Contracting) construction services
- Retrofit metal roofing installation and repairs
- Foundation engineering and construction

INDUSTRIES SERVED

- Aviation
- Agriculture
- Industrial
- Forestry
- Mining
- Wineries
- Automotive
- Religious Buildings
- Distribution
- Community Centres
- Manufacturing
- Offices
- Recreation
- Retail
- Schools
- Storage Facilities
- Transportation
- Warehouses

As a trusted industry expert, we work with our manufacturers and their complete design and engineering experts for fast, client specific building designs and pricing including options and alternatives that you may not have considered in your initial vision to add long term value and efficiency to your building.

OUR AFFILIATIONS



British Columbia Construction Association



Greater Westside BOARD OF TRADE





OUR PROJECTS



HONEY CANDLES | KASLO, BC



AQUA BOAT CLUB | KELOWNA, BC



BLACK SWIFT WINERY | WEST KELOWNA, BC



KF AERO | KELOWNA, BC



APPROVED SERVICES | WEST KELOWNA, BC



PENTICTON HATCHERY | PENTICTON, BC



OUR PROJECTS



LARKSPUR | KAMLOOPS, BC



VALHALLA HELICOPTERS | WEST KELOWNA, BC



PACIFIC RIM | KELOWNA, BC



WEST KELOWNA STABLES | WEST KELOWNA, BC



WIZARD BOAT STORAGE | KELOWNA, BC



BARKMAN CONCRETE | MERRITT, BC



OUR PROJECTS



NORSTEEL HEAD OFFICE | WEST KELOWNA, BC



HELMUT SAUSAGE | VERNON, BC



VIP SOAPS BLDG 2 | MISSION, BC



KF HANGAR EXPANSION | KELOWNA, BC



LOCK & KEY MINI STORAGE 2 | KAMLOOPS, BC



REIDCO METAL INDUSTRIES | KELOWNA, BC



OUR PROJECTS



NICHOLLS EARTHWORKS | KELOWNA, BC



TOMMY GUNS WAREHOUSE | KELOWNA, BC



TK'EMLUPS CARWASH | KAMLOOPS, BC



ECOTEX | GENELLE, BC



LAVINGTON RINK | LAVINGTON, BC



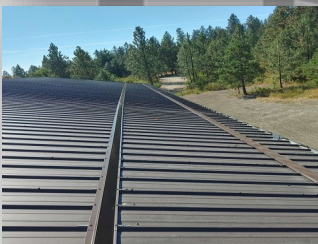
RAINMAKER WINERY | OLIVER, BC



SPECIAL FEATURES AND UPGRADES



INSULATED WALL PANELS *(RECOMMENDED TO HELP WITH ENERGY EFFICIENCY)* Insulation Metal Panels serve as a complete wall or roof assembly. That means they can provide cladding, insulation, a water-resistant barrier, an air barrier, and finished surfaces all in one panelized product – essentially everything but the building structure upon which they are installed. Consider using insulated wall panel systems in the design of your new steel building. Insulated panel systems are state-of-the-art including energy efficiency with R values of R6 to R41, create a better building seal to avoid heat loss, and are durable, low maintenance, non-combustible, and have many designs and color options. These systems are state-of-the-art and an option to consider.



SNOW GUARDS *(RECOMMENDED FOR AREAS PRONE TO HEAVY SNOWFALL)* Snow guards are devices used on rooftops to help snow and ice melt completely and drift off your metal roof in small amounts, rather than all at once. Without snow guards, your roof may be susceptible to “roof avalanches.” A roof avalanche is the sudden release of snow and ice all at once, which can cause damage to your gutters, lower roof area, skylights, and any other objects or people below your roof. If you live in an area prone to snowfall, especially heavy snowfall, Norsteel highly recommends installing snow guards for metal roofs. As snow accumulates, ice dams can form, snow gets heavier, and your metal roof could be prone to damage which is not covered by the manufacturer's warranty.



CANOPIES Canopies from 2' to 30' can be added to your building for both aesthetic as well as functional purposes. They can protect window and doorways from the elements, create a welcoming appearance, and cover entrance and exit areas for customers and employees. They can extend your usable work area by creating additional work space outdoors, protecting valuable equipment and employees. Canopies can also incorporate lighting details and signage to further enhance both the look and function of your building.



ROOFING | RE-ROOFING

In addition to designing and building full structures, we also repair and replace roofing on non-residential buildings with highly durable, energy efficient metal roofing. If your roof is aging or leaking, maybe it's time for a new metal roof.



HEAT TRACE TAPE *(RECOMMENDED TO MELT SNOW AND PREVENT ICE BUILDUP)*

Using heat tape for metal roofing, downspouts, and gutters can help alleviate ice dams and ensure proper drainage. The price to install heat tape on metal roofing is substantially lower than the cost of repairing your home once the damage has been done.



SPECIALTY CLADDING

Norsteel offers a variety of specialized cladding types and colors. Please contact brandon@norsteel.build to go over options and pricing.